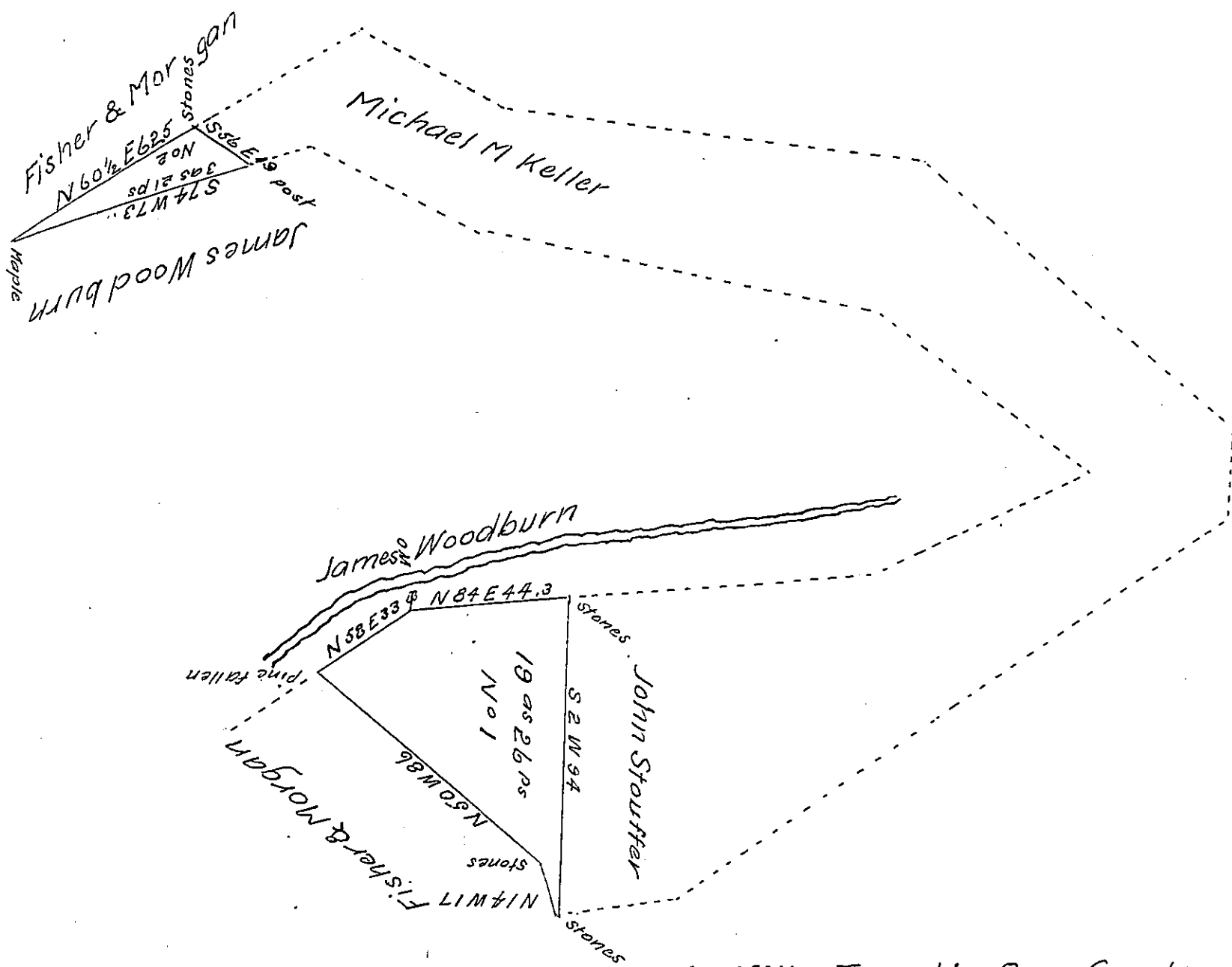


FORM NO. 1.



Draught of two lots of land Situate in Miller Township Perry County containing 22^{as} 47 perches and the allowance of Six per cent for roads &c. No 1 contains 19^{as} 26 perches No 2 contains 3^{as} 21 perches being part of a tract of land Surveyed on a warrant to Robert Woodburn and John Woodburn dated December 4th 1786 Surveyed the above for Patenting for James Woodburn March 24th 1853 To J. Porter Brawley Surveyor James Woods CS General of Pennsylvania

IN TESTIMONY that the above is a copy of the original remaining on file in the Department of Internal Affairs of Pennsylvania, made conformably to an Act of Assembly approved the 16th day of February 1833, I have hereunto set my hand and caused the Seal of said Department to be affixed at Harrisburg, this ninth day of October 1907.

Henry Hoover
Secretary of Internal Affairs.